

# FLAT BELT CONVEYOR

4", 8", 12", 18" and 24" Chain Widths



## WHY MCE

- > **Durable**
- > **Versatile**
- > **Quick & Cost-effective**
- > **Made in the U.S.A.**

## ABOUT MCE FLAT BELT CONVEYOR

Due to their versatility and affordability, belt conveyors are a good choice for moving products from one point to another. Belt conveyors transport product in a straight line, and are also a good option to move products through elevation changes. Because of the simplicity of the flat, moving belt, Nercon's belt conveyors can be used to effectively move a variety of product sizes, shapes and weights for long lengths. Regular and irregular shaped items, large and small, light and heavy, are conveyed successfully as well.

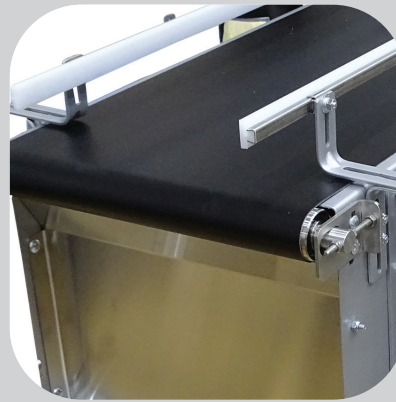
## FEATURES

- > Less maintenance for tension adjustments
- > High capacity
- > Optimum viewing for inspections
- > Quick replacement of worn belt sections

## MCE Flat Belt Conveyor Standard Features



Tan Rough Top



Black PVC



White Polyurethane Food Grade



### INDUSTRY SEGMENTS

- Snack Food & Bakery
- Packaged Foods
- Meat & Poultry
- Dairy Foods
- Produce
- Frozen Foods
- Ready-to-Eat
- Pharmaceuticals



### APPLICATION TYPES

- Bottles
- Cans
- Cartons
- Pouches
- Pucks
- Trays

Standard Flat Belt Conveyor typically ships in 15-20 business days.

Your local MCE Distributor:



Modular Conveyor Express  
600 S. Commercial Street | Neenah, WI 54956  
844-293-2816 | Fax: 920-233-3159



© 2019 Nercon Eng. & Mfg., Inc. All rights reserved. 8/18 000 LIT-BeltConveSell ENVINK